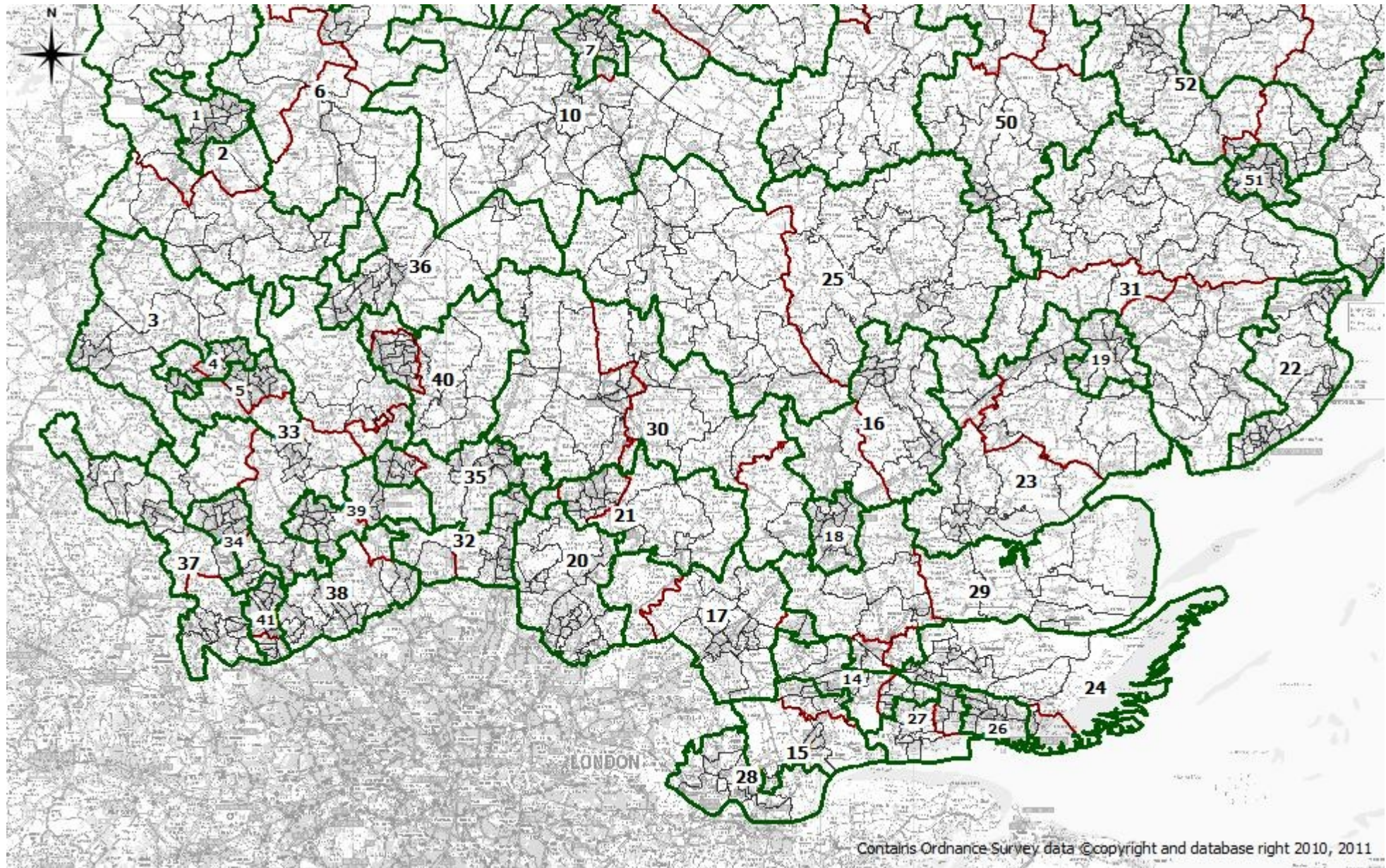


Eastern (56 constituencies)



1. BEDFORD (77,312)
2. NORTH WEST BEDFORDSHIRE (78,562)
3. SOUTH WEST BEDFORDSHIRE (75,228)
4. LUTON NORTH (74,746)
5. LUTON SOUTH (75,706)
6. EAST BEDFORDSHIRE AND ST NEOTS (78,479)
7. CAMBRIDGE (75,259)
8. NORTH EAST CAMBRIDGESHIRE (78,047)
9. NORTH WEST CAMBRIDGESHIRE (77,397)
10. SOUTH CAMBRIDGESHIRE (75,271)
11. SOUTH EAST CAMBRIDGESHIRE (77,124)
12. HUNTINGDON (75,968)
13. PETERBOROUGH (75,517)
14. BASILDON EAST AND BENFLEET (75,154)
15. BASILDON WEST AND EAST THURROCK (73,584)
16. BRAINTREE (76,052)
17. BRENTWOOD AND BILLERICAY (75,972)
18. CHELMSFORD (77,835)
19. COLCHESTER (76,703)
20. EPPING FOREST (76,983)
21. HARLOW AND ONGAR (74,798)
22. HARWICH (76,724)
23. MALDON (74,731)
24. ROCHFORD AND SHOEBURY (76,810)
25. SAFFRON WALDEN (77,534)
26. SOUTHEND CENTRAL (73,654)
27. SOUTHEND WEST AND CANVEY (74,120)
28. THURROCK (75,266)
29. WICKFORD AND BURNHAM (78,539)
30. STORTFORD AND STANSTED (76,376)
31. STOUR VALLEY (75,671)
32. BROXBOURNE (76,457)
33. HARPENDEN (73,375)
34. HEMEL HEMPSTEAD (76,841)
35. HERTFORD AND WELWYN (76,973)
36. NORTH HERTFORDSHIRE (77,731)
37. SOUTH WEST HERTFORDSHIRE (73,925)
38. HERTSMERE (73,636)
39. ST ALBANS AND HATFIELD (78,770)
40. STEVENAGE (75,852)
41. WATFORD (77,724)
42. BROADLAND (79,026)
43. GREAT YARMOUTH (75,090)
44. MID NORFOLK (77,173)
45. NORTH NORFOLK (78,206)
46. NORTH WEST NORFOLK (77,371)
47. SOUTH WEST NORFOLK (79,313)
48. CITY OF NORWICH (75,613)
49. WYMONDHAM (75,367)
50. BURY ST EDMUNDS AND SUDBURY (76,408)
51. IPSWICH (75,195)
52. STOWMARKET AND IPSWICH NORTH (78,722)
53. SUFFOLK COASTAL (76,915)
54. WEST SUFFOLK (77,926)
55. WAVENEY (79,132)
56. EYE AND DISS (76,844)